

## Division 1



Appearance of gate canopy area complete and clean ready for turn-over to the fixturing phase.



Appearance of retail sales area with clean floor, no materials, debris, equipment, etc. for turn over to fixturing phase.



Appearance of front offices, mechanical rooms, etc. complete and ready for turn-over to fixturing phase.



Appearance of Janitors room clean, complete and ready for turn over to the fixturing phase.



Example of Hardware mezzanine upper level complete and clean for turn over to the fixturing phase.



Example of Hardware mezzanine complete, clean and ready for turn over to the fixturing phase.

## Division 1



Example of receiving area complete, clean and ready for turn over to the fixturing phase.



Appearance of front sidewalk area at turn over to fixturing phase.



Elevator at mezzanine complete and ready for turn over to fixturing phase.



Completed special order area ready for turn over to fixturing phase.



Completed elevator at mezzanine ready for fixturing phase.



Completed elevator floor at mezzanine ready for fixturing phase.

## Division 1



Completed elevator mechanical room at mezzanine ready for fixturing phase.



Complete elevator mechanical room at mezzanine ready for fixturing phase. Filled and caulked to deck.



Example of completed steel (attached) guard shack ready for turn over to fixturing phase.



Example of completed steel (attached) guard shack ready for turn over to fixturing phase.



Example of completed steel (attached) guard shack ready for turn over to fixturing phase.



Example of clean electrical room at turn over.

## Division 1



Contractor to have extinguishers inspected and tagged.



## Division 2



Example of seeded area. Fine graded with no rocks, dirt clumps, etc. larger than 1/2" diameter. Trees are mulched, tied off plumb and plastic protection installed. Low and high spots in grades leveled for final appearance.



Example of completed front landscape planters complete with landscape fabric, mulch/stone, plantings with soaker/drip type irrigation.



Example of mulch bed plantings with sprinkler head style irrigation.



Example of sodded area with no high and low spots. No gaps between sod roll joints. Trees to be tied off per plan and specifications until established.



Example of sodded area with no high and low spots. No gaps between sod roll joints. Trees to be tied off per plan and specifications until established.



Example of sodded area with no high and low spots. No gaps between sod roll joints. Trees to be tied off per plan and specifications until established.

## Division 2



Typical manhole with piping penetrations sealed with concrete (as required per civil drawings/local authorities)



Typical manhole with piping penetrations sealed with concrete (as required per civil drawings/local authorities)



Example of typical utility backfill procedure per civil drawings.



Example of downspout storm with bell end flush to pallet rack slab and 1' PVC sleeve above grade.



Example of acceptable final grade prep prior to seeding with smooth, level surfaces and nothing larger than 1/2" in diameter, No high and low spots.



Example sod trees tied off with mulch placed at base awaiting final grade and seeding.

## Division 2



Example of erosion mat on 3 to 1 slope (or greater) and hydro-seed placed on acceptable final grade.



Example of cart corral striping.



Example of island trees with staked, tree wrap and drain tile per plan.



Example of utility marker with metal stake and sign.



## Division 3



Typical perimeter footings with temporary shore anchor bolts and keyway on all 4 sides.



Typical perimeter footings with temporary shore anchor bolts and keyway on all 4 sides.



Example of helical anchor free-stand method of precast panel installation.



Typical footings and piers rebar installation.



Example of receiving swale to storm inlet/grate for proper drainage.



Trash compactor slab.



## Division 3



Jockey pump pad. Concrete poured by General Contractor if required.



Fire pump poured by General Contractor if required.



Example of acceptable planter/drain rubbed out.



Example of elevator threshold.

## Division 4



Example of front office area masonry.



Typical completed masonry plumbing wall in bathroom location. Plumbing as required per fixtures – verify.



Slope concrete to meet plywood floor at mezzanine.



Completed front planter, Rub out completed.



Rub out loading dock retaining wall.



Example of masonry at front office/ utility rooms.

## Division 4



Example of masonry at front office/ utility rooms.



Example of masonry at front office/ utility rooms.



Example of masonry at front office/ utility rooms.

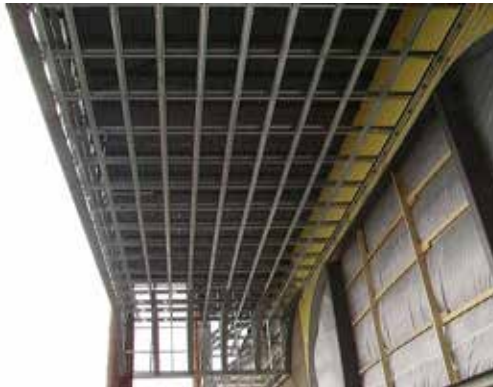
## Division 5



Typical hallway light gauge framing.



Typical light gauge framing at front office area.



Example of front entrance with light gauge framing construction.



Front canopy parapet bracing.



Example of exit canopy truss construction.



Example of bi-fold door structural steel.



## Division 5



Steel railing along loading dock.



Example of exit canopy truss construction with light gauge radius frames.



W10x17 Splice plates by General Contractor.



Elevator diamond plate.

## Division 6



Completed treated board shed catwalk & railing.



Complete treated board shed catwalk & Railings.



Skylight at guard shack.



Interior mezzanine walls complete – filled in around all penetrations, etc.



Grip strut cut around racking leg and thru-bolted into 2x member.



Front mezzanine-showing plywood butting into masonry block & drywall per plan.

## Division 6



Board shed grip strut support with through bolts. Cut off bolt ends flush with nuts.



Example of tongue and groove back wall of treated board warehouse.



Example of through bolts and stainless steel fasteners on back wall of treated board warehouse.



Splice plates at warehouse trusses.



Floor frame at warehouse.



3' bollard covers at entrance, glued and caulked.



## Division 6



Bollard covers glued down.



Straight screw pattern on mezzanine deck and tight joints.



Straight screw pattern on mezzanine deck and tight joints.



## Division 7



Polyurethane control joint & construction joint caulking  
– no residue on slab.



Typical masonry to precast caulk joint prior to final painting.



Typical masonry to masonry caulk joint completed prior to final coat of paint.



Front entrance insulation and vapor barrier ready for drywall.



All joints, corners, door jambs, thresholds, etc., caulk with paintable caulk prior to painting in guard shack (no voids)



All joint, corners, door jambs, thresholds, etc., caulked with paintable caulk prior to painting in guard shack (no voids)

## Division 7



Example of front canopy soffit and exit canopy rolled soffit.



Scupper deflector (2) installed at front canopy into planters.



Sliding door on treated board warehouse.



Trim saw cut into precast with caulking.



Canopy over bathrooms.



Caulk both sides of column to precast (2 locations) at receiving and paint to match walls.

## Division 7



Caulk interior an exterior at special order area walls to precast (typical)



Caulking around exterior columns to concrete.



Example of canopy flashing precast riglet cut and caulked.



Example of clear panels and girts above garden center overhead doors.



Example of front entrance soffit with access hatch and recessed light fixture.



Example of black anodized cap at garden center wall.

## Division 7



"J" trim at soffit around columns.



Example of bi-fold doors complete with painting, sheeting, operators, etc.



Example of bi-fold doors complete with painting, sheeting, operators, etc.



Example of bi-fold doors complete with painting, sheeting, operators, etc.



Example of bi-fold doors complete with painting, sheeting, operators, etc.



Example of bi-fold doors complete with painting, sheeting, operators, etc.



## Division 7



Example of bi-fold doors complete with painting, sheeting, operators, etc.



Example of attached guard shack.



Example of attached guard shack soffit steel.



Specialty trim at exit and entrance – not fastened to the face.



Example of EIFS system carried over precast.



Clear panels always fastened in the flats.

## Division 7



Example of siding and trim at bathrooms.

## Division 8



Example of black anodized break metal installed at front entrance per plan.



2 sets of photo eyes set 1' and 5' A.F.F.



Loading dock overhead doors.



Example of completed exit doors and arched windows.



Continuous hinge on all single and double man doors.



Access hatch in men's bathroom hallway painted white.

## Division 8



Wrap all jambs and headers with black anodized break metal. Note: Also wrap beam connection plate. Caulk all break metal to frames (black).



Wrap all jambs and headers with black anodized break metal. Note: Also wrap beam connection plate. Caulk all break metal to frames (black).



Example of double man doors with panic push bars and rubber bumpers.



Example of man door panic push bar and exterior pull handle.



Example of janitors room doors with passage style door handle and no closures, painted white.



## Division 8



Example of brick mold caulked to masonry walls with straight/clean paint cut lines.



Example of overhead door buttons with key switch to shut off operator.



Example of exterior pull handle to panic bar hardware at electrical room doors and elevator mechanical room door.



Example of large electrical room door panic bar.



Windows completed at Electrical department.

## Division 8



Example of acceptable “J” box mounted on door for cord coil to miller edge connector.



Example of bi-fold doors complete with painting, sheeting, operators, etc.



Example of bi-fold doors complete with painting, sheeting, operators, etc.



Example of bi-fold doors complete with painting, sheeting, operators, etc.



Example of bi-fold doors complete with painting, sheeting, operators, etc



Example of bi-fold doors complete with painting, sheeting, operators, etc.

## Division 8



Example of two sets of keyed switches at cart doors



Example of cart door rubber seal.



Example of cart door operators.



Example of how cart door springs and shaft mounting.  
Blocking installed prior to black anodized metal.



Example of photo eyes wiring hidden and tied.



Example of photo eyes wiring hidden and tied.

## Division 8



Example of special order area keyed buttons and photo eyes.



Example of coil cord wire – eyebolt.



Example of garden center overhead door springs.



Example of angle to be installed on 16' wide overhead door.



Elevator Mechanical room door.



Large electrical room door with two louvers.



## Division 9



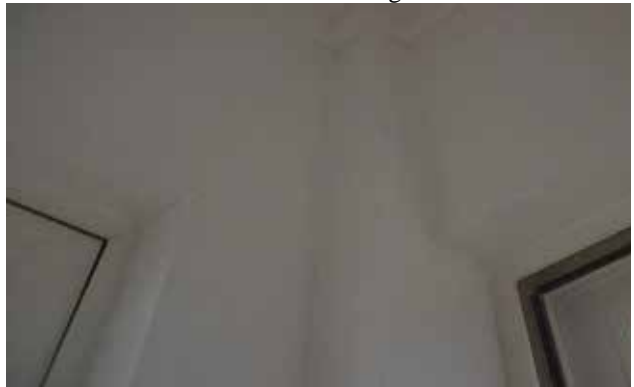
Front office area drywall ceiling with straight clean edges and caulked to walls with paintable caulking.



Typical drop ceiling with recessed lights. Track tight to walls and level throughout.



Front office area drywall ceiling with straight clean edges.



Paint complete at guard shack. All joints and screw holes caulked.



Paint complete at guard shack.



Example of precast weld plates primed and painted on large back overhang and Garden Center

## Division 9



Paint diagonal roof bracing black.



Example of brick mold caulked to masonry walls with straight/clean paint cut line.



Example of janitors room doors with passage style door handle and no closures, painted white.



Example of EIFS completed matching adjacent surface.



Front entrance/exit bollards.



Example of completed elevator rubber flooring.

## Division 9



Overhead door header plates painted black.



Example of hardware mezzanine paint masking on racks.



Example of masking off racking. Note: The cut line below structural rack beams.



Example of mezzanine stair treads and risors.



Stripe at cart door.

## Division 10



Typical fire extinguisher to column installation (sign by others) Verify height with local authority prior to installation.



Install yellow bollard covers. Trim to length as required.



Wrought iron fence complete with stainless steel anchor bolts.



Complete wrought iron fencing.



Example of fire extinguisher at front office.



## Division 11



Dock levelers, bumpers (4 expansion anchors per bumper required) and cushions. See manufacturer's recommendations for installation.



Example of expansion anchors (four per bumper)



Example of full welds on bumpers and levelers.

## Division 15



Treated board shed sprinkler system as high as possible  
(Example)



Treated board shed dry sprinkler system must not  
interfere with lumber product.



Exterior flush mounted sill cock. Caulked all four sides  
for complete installation.



Example: All piping above joists and running down  
behind chase wall.



Example of painted sprinkler drops between doors 3 & 4  
with appropriate metal signage.



Typical example of treated board shed sprinkler room.

## Division 15



Example of recessed spicket in the garden center.



Example of drum drip with heat tape and power for freeze up protection.



Install protective cover over plumbing for receiving area sill cock and paint.



Example of downspout at the backside of the garden center.



Mop sink with mop hangers, faucet and hose. Caulk around entire sink to floor and wall.



Elevator hoist way installed. Ready for mason to complete the openings.

## Division 15



Elevator hoist was installed. Ready for mason to complete openings.



Example of hoist way and imbeds.



Exhaust fan diffuser.



Example of acceptable interior drain piping in receiving area.



Irrigation and domestic valves.



Irrigation control box.



## Division 15



Example of sump pump in elevator.



Example of exhaust fans in monitor room.



Example of sprinkler and plumbing drops in building materials by pole barn display within 8" of wall.



Example of sprinkler and plumbing drops in building materials by pole barn display within 8" of wall.

## Division 16 – Electrical



Typical outlet. Recessed with stainless steel cover plate.



Typical motion sensor light switch with stainless steel cover plate.



Typical outlet on column installation painted white to match.



Carpet machine lighting.



Electrical at guard shack with push button and stainless steel cover plates.



Typical drop ceiling with recessed lights.

## Division 16 – Electrical



Electrical department drops ready for turn over to fixturing phase.



Light base in islands or landscape area (not painted)



Wind chains installed to light fixture in guard shack.



Example speaker mount.



Example of canopy lights installed at treated board warehouse.



Example of fluorescent lighting in pallet racks.

## Division 16 – Electrical



Example of plugmold on Madix.



Example of plugmold on Madix.



Example of outlets of Hardware mezzanine. Conduits tight to deck. In deck flutes whenever possible.



Example of Electrical department wall cloud wiring/plugmold.



Example of single outlet in Wallcoverings department.



Example of column light electrical. Flex through bearing plate into column.



## Division 16 – Electrical



Typical quad box installation (with two outlet type covers) in carpet area.



Example of three gang box with two outlets and one whip (break out).



Example of outlet on light pole.



Example of lighting bracing at building fascia.



Complete generator transfer switches and annunciator panels.



Example of complete wire pulls ready for fixturing phase. Concrete cut straight and no more than 1/4" cut out around box.

## Division 16 – Electrical



Sound cabinet



Sound cabinet.



Sound cabinet



Example of recessed stainless steel cover plat for abandoned/relocated floor box (two gang shown)



Example of acceptable exit sign in retail area mounted on rigid conduit (painted white). Mounted at AHJ approved height if mounting in bar joists is not acceptable.



Correct run of low voltage wire over girder. Do not run joist to joist because of sagging.

## Division 16 – Electrical



Example of fence lighting



Example of island receptacles



Generator, CT cabinet and transformer island.



Warehouse electrical panels



Warehouse baseboard heater



Complete elevator



## Division 16 – Electrical



Complete receiving area battery chargers



Pump controller



8' lights in racking



Battery charger and disconnect.



Example of completed floor box – cut out per spec.



Example of separate generator panels.



## Division 16 – Electrical



Example of exit sign and motion sensor on Garden Center without transom windows.



Example of white lights on attached gate canopy.



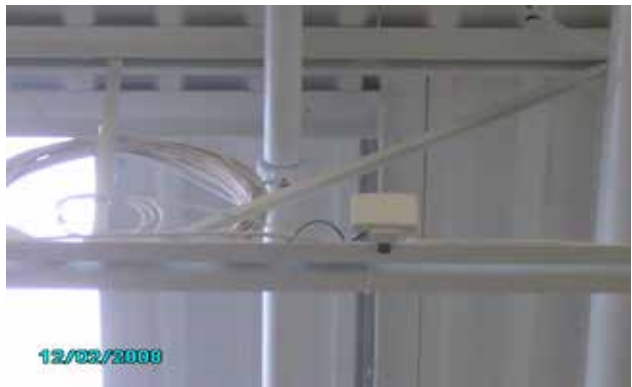
Recessed speaker in bathroom.



Break room electrical.



Overhead CAT 5 for computer location.



Location for CAT 5 for wireless phones.

## Division 16 – Electrical



Integrated by pass switches.



Exit sign and motion sensor over man door.



Integrated by-pass switches.



Integrated by-pass switches.



Example of switch gear.



Acceptable drops and raceway to switch gear or as required by code.

## Division 16 – Electrical



Acceptable drops and raceway to switch gear or as required by code.



Bi-fold door limit switch (center of door)



Bi-fold door switch for door locks.



Coax wiring for department monitors.



Electrical example for pallet rack lights.



Pallet rack light with adjustable arm.

## Division 16 – Electrical



Disconnect switch at overhead door operators.



Electrical room to have toggle light switches.



## Division 16 – Fire/Security



Flow switches.



Example of smoke detector.



Module boxes in main sprinkler room.



Sprinkler room smoke detector.



Door contract on roof hatch.



Glass single door.

## Division 16 – Fire/Security



Recessed door contact.



Safe door contact installation.



Safe door contact installation.



Overhead door contact.

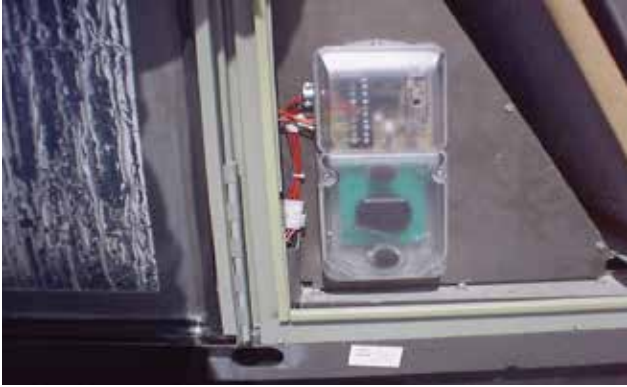


Pull station. This always needs to be installed this close to the door.



Installation of emergency alarm at front office.

## Division 16 – Fire/Security



Smoke duct detector.



Key lock box.



Gate contact.



Hold up button at returns counter.



Contact to be installed on cash room door.



## Division 16 – Fire/Security



Example of wall mounted strobe in bathroom.



Neatly wired fire/security panels.



Neatly wired fire/security panels.



Example of sprinkler room.



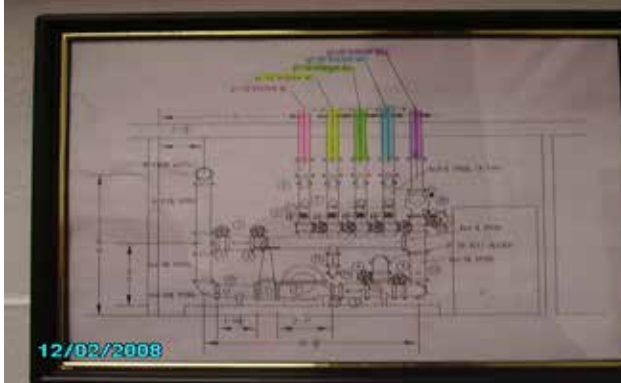
Example of zone maps in sprinkler room.



Example of zone maps in sprinkler room.



## Division 16 – Fire/Security



Example of zone maps in sprinkler room.



Complete flow switches.



Fire/burg wires ran on top of bottom cord and wind bracing to be hidden as best as possible.



Fire/burg wires ran on top of bottom cord and wind bracing to be hidden as best as possible.



Example of weatherproof warehouse horn strobe (if applicable)



Complete electrical room.

## Division 16 – Fire/Security



Expansion cabinet wiring neatly.



Panels wired neatly.



Example of complete security and energy management.



Example of complete security and energy management.



HVAC unit reset switches (to be labeled)



Warehouse panel wired neatly.

## Division 16 – Fire/Security



Example of module in sprinkler room.



Low air switch in warehouse.